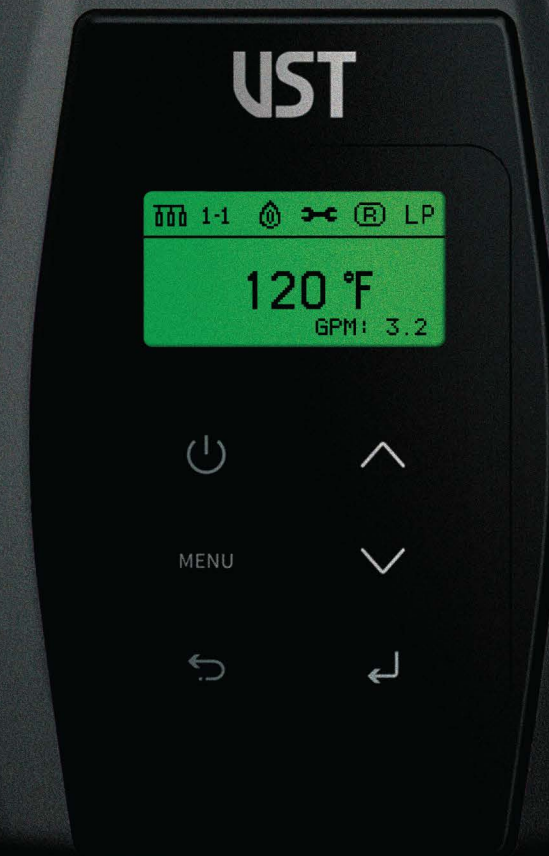


VESTA

PREMIUM CONDENSING WATER HEATER



HIGH EFFICIENCY

Produce endless hot water using less energy than tank-type water heaters.

ECO-FRIENDLY

Stop wasting energy with tank standby losses. save the Earth with High efficiency + Ultra low NOx VESTA's advanced technology.

COMPACT DESIGN

Free up more space with wall mounted units.

HIGH-DURABILITY

Built to last. Many years of trouble free operation.



VARIOUS OPTIONS

Tankless or hybrid water heater? Boiler or even Combi boiler? We have them all!

PRODUCT LINE UP

new

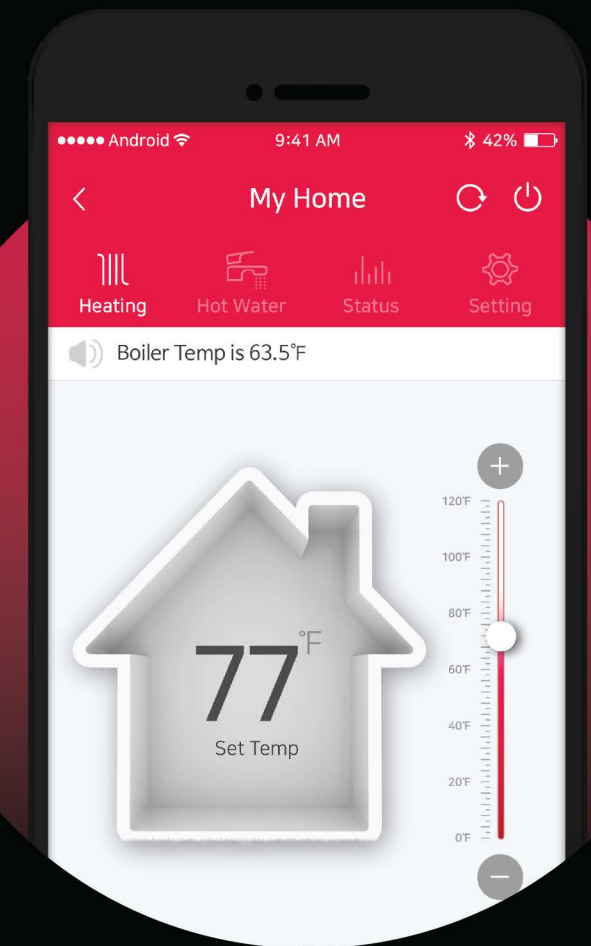
VXP/VX

VTP/VTS

VRC

R-mote

Wi-Fi CONTROL SYSTEM



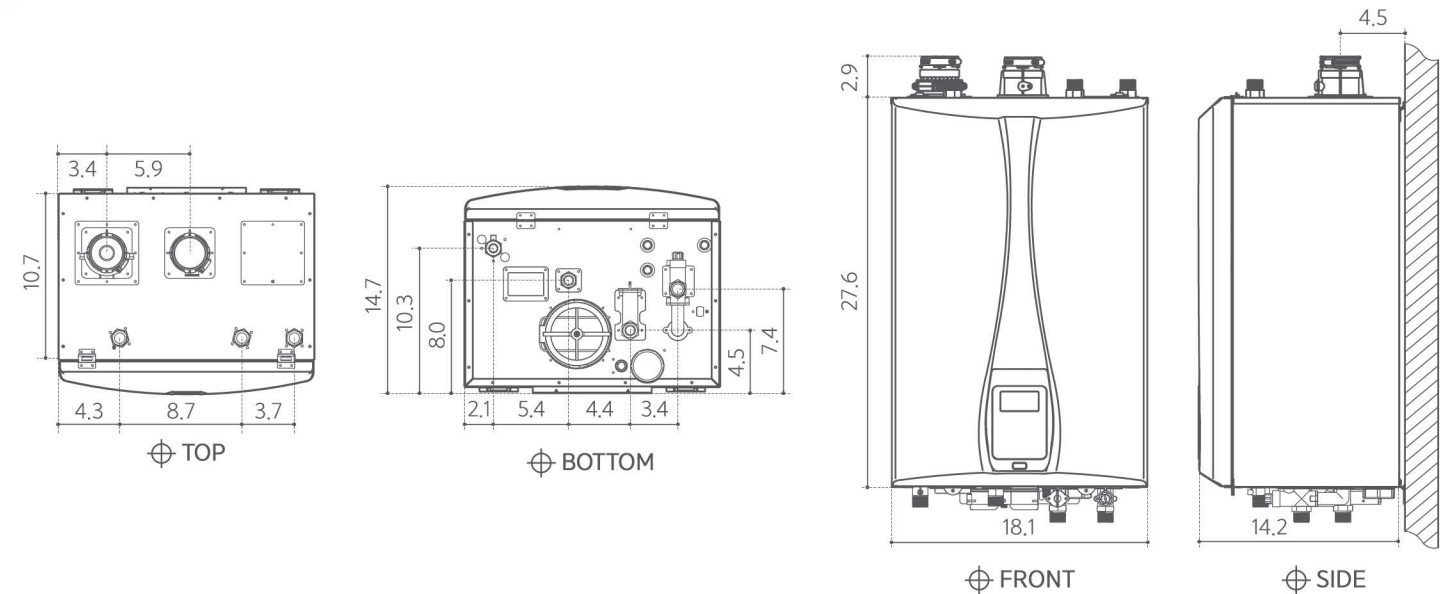
With the highest quality connectivity, you can easily link your VST product with a push of a button. Control your comfort and convenience with a fingertip.

new PRODUCT

VXP VX

- Turn down ratio up to 15:1
- Internal buffer tank eliminates cold water sandwich
- Scale filter implemented in the buffer tank
- "Coil around Burner" stainless steel heat exchanger
 - Minimizes pressure drop with spiral structure, Two weld points
- Flexible Installation**
 - Upward or Downward Installation, Right or Left side optional air-Intake installation
- Simple field gas conversion from NG to LP (LP conversion kit included)**
- Cleaning friendly : Easy to separate and clean**
 - Cleaning friendly : External inlet/return/recirculation filter
- Built-in 3 speed stainless steel recirculation pump**
- Residential or Commercial installation**
- Self Calibration – customizes unit operation parameters**
- 2" PVC vent up to 75 (3" venting : up to 150ft)**
- Leak detection sensor / High Quality Digital Display**

DIMENSIONS [UNIT : Inch]



SPECIFICATION

MODEL		VXP-9	VX-9	VXP-3	VX-3
Heat Capacity (Input)	Natural Gas	13,300-199,000 BTU/H		13,000-130,000 BTU/H	
	Propane	13,300-199,000 BTU/H		13,000-130,000 BTU/H	
Dimension (W x H x D)		18.1" x 27.6" x 14.1" (460mm X 700mm X 360 mm)		15.7" x 26.3" x 10.8" (400mm X 670mm X 276 mm)	
Installation Type		Indoor or Outdoor wall-hung			
Venting Type		Force draft direct vent			
Ignition		Electronic ignition			
Water Pressure		15 ~ 150 psi			
Water Connection Location		TOP or Bottom Type			
Supply Pressure	Natural Gas	3.5" ~ 10.5" WC			
	Propane Gas	8.3" ~ 13" WC			
Minimum Flow Rate		0.1 GPM			
Temperature Range		98°F ~ 140°F (37°C ~ 60°C) / Commercial : up to 180°F (82°C)			
Connection Size	Cold Water Inlet	3/4" NPT	3/4" NPT	3/4" NPT	3/4" NPT
	Hot Water Outlet	3/4" NPT	3/4" NPT	3/4" NPT	3/4" NPT
	Recirculation Water Inlet	3/4" NPT	-	3/4" NPT	-
	Gas Inlet	3/4" NPT	3/4" NPT	3/4" NPT	3/4" NPT
Power Supply	Main Supply	120V, AC 60Hz / use less than 5amp			
Materials	Heat Exchanger	Stainless Steel			
Venting	Exhaust	2" or 3" PVC, CPVC, Polypropylene 2" or 3" Special gas vent type BH (Class II, A/B/C)			
	Intake				
	Vent Clearance	0" to combustibles			
Safety Devices		Flame rod, Air Pressure Sensor, Over heat preventer, Exhaust temperature high limit sensor, Leak Sensor, Freeze protection device			

CONFIGURATION

VENT

Designed for 2" venting (Up to 75')



PUMP

Built-in Recirculation pump (VXP model only)



ORIFICE

Easy field conversion from NG to LP



SENSOR

Leak detection sensor



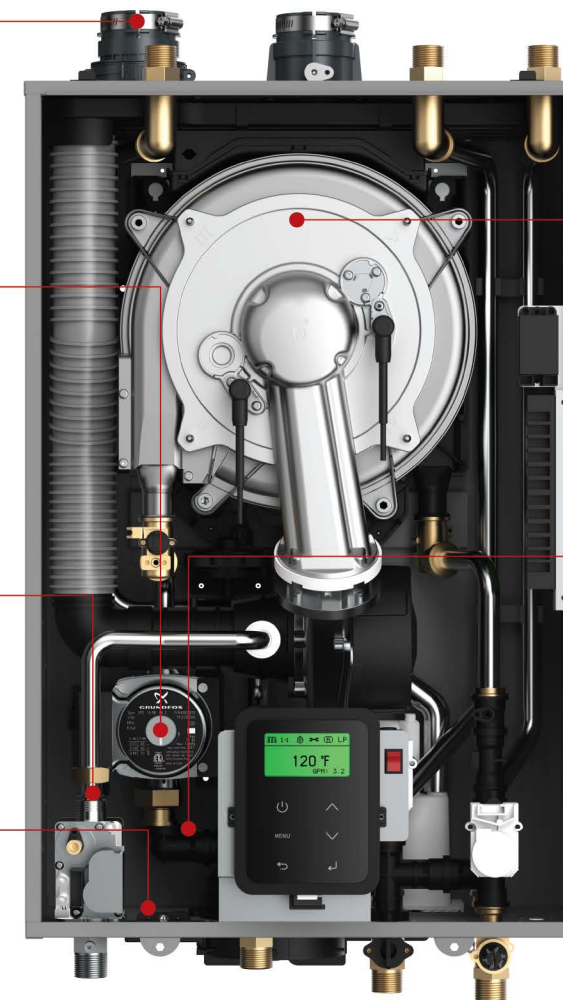
HEAT EXCHANGER

Coil around Burner SS Heat Exchanger



TANK

Built-in Buffer tank



● **PRODUCT**

VTP VTS

0.96 UEF

Utilizes existing 1/2" gas line up to 24'

Self Calibration – Customizing unit operation parameters.

Built-in stainless steel tank prevent cold water sandwich and produces quick endless hot water.

Simple field conversion from Natural Gas to LP/ Propane.

Environmentally friendly Low NOx combustion system – SCAQMD 1146.2 compliant.

Service friendly access panels and Air intake filter.

High quality Digital front panel display.

Built-in 3 speed stainless steel recirculation pump.

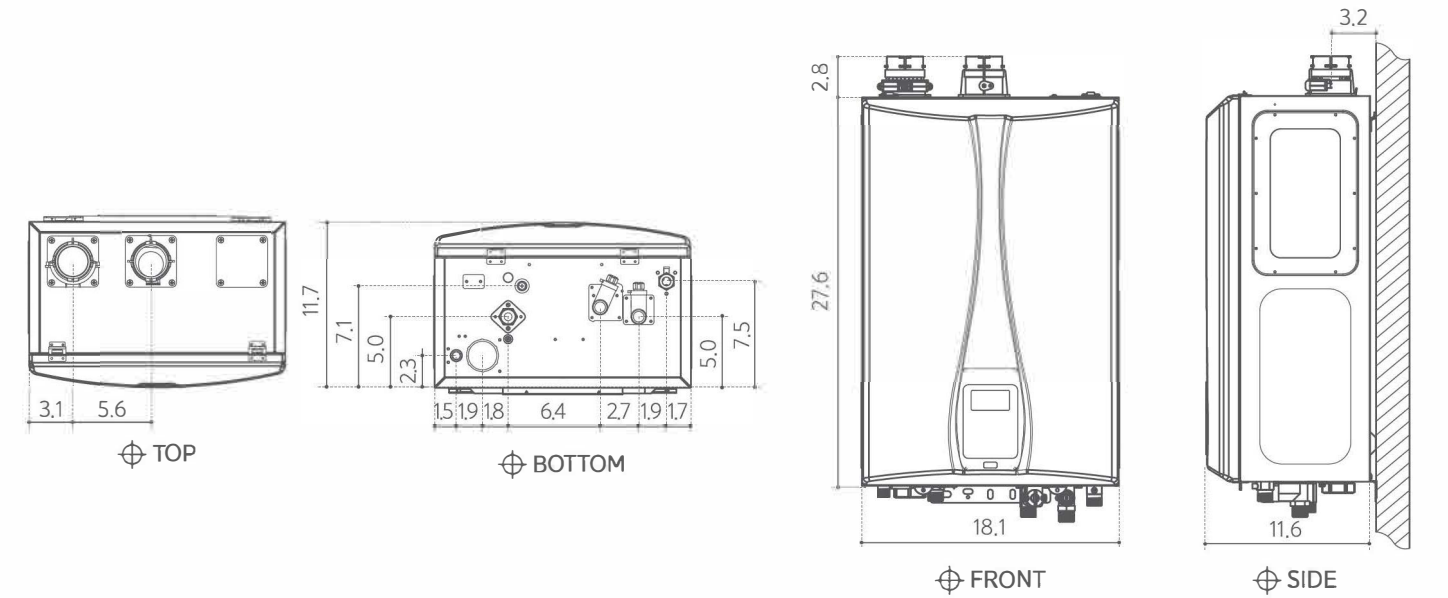
Applicable for residential and commercial installation.

Built-in external measuring port for CO2 on the exhaust duct.

● **SPECIFICATION**

MODEL		VTP-150	VTS-150	VTP-199	VTS-199
Heat Capacity (Input)	Natural Gas / Propane	19,900 – 150,000 BTU/H		19,900 – 199,000 BTU/H	
UEF	Natural Gas / Propane	0.96		0.96	
Flow Rate (DHW)	35°F (19°C) Temp Rise	8.4 GPM (32 LPM)		11.2 GPM (42 LPM)	
	45°F (25°C) Temp Rise	6.5 GPM (24 LPM)		8.7 GPM (33 LPM)	
	77°F (37°C) Temp Rise	3.8 GPM (14 LPM)		5.1 GPM (19 LPM)	
Dimension (W x H x D)		18.1" x 27.6" x 11.6" (460mm x 700mm x 295mm)			
Weight		75lbs(34kg)	67lbs(30kg)	75lbs(34kg)	67lbs(30kg)
Installation Type		Outdoor/Indoor wall mounted			
Venting Type		Force draft direct vent			
Ignition		Electronic ignition			
Water Pressure		15 ~ 150 psi			
Supply Pressure	Natural Gas	3.5" ~ 10.5" WC			
	Propane Gas	8" ~ 13" WC			
Manifold Pressure	Natural Gas (Min. – Max.)	0.01"~0.35"WC (0.01"~0.30"WC)		0.01"~0.59"WC (0.01"~0.55"WC)	
	Propane Gas (Min. – Max.)	0.01"~0.30"WC (0.01"~0.26"WC)		0.01"~0.56"WC (0.01"~0.50"WC)	
Minimum Flow Rate		0.1 GPM			
Temperature Range		98°F ~ 140°F (37°C~60°C) / Commercial : up to 180°F(82°C)			
Connection Size	Cold Water Inlet	3/4" NPT			
	Hot Water Outlet	3/4" NPT			
	Recirculation Water Inlet	3/4" NPT (only VTP model)			
	Gas Inlet	3/4" NPT			
Power Supply	Main Supply	120V, AC 60Hz / use less than 5amp			
	Power Consumption	135 W	75 W	165 W	105 W
Materials	Heat Exchanger	Stainless Steel			
Venting	Exhaust	2" or 3" PVC, CPVC, Polypropylene 2" or 3" Special gas vent type BH (Class II A/B/C)			
	Intake				
	Vent Clearances	0" to combustibles			
	Length	2"	60ft (18.3m)		
	3"	150ft (45.7m)			
Safety Devices		Flame rod, APS, Overheat prevent, Freeze protection device, Exhaust temperature high limit sensor, Power surge fuse			

● **DIMENSIONS** [UNIT : Inch]



● **CONFIGURATION**

VENT

Designed for 2" venting (Up to 60')



BURNER

Eco-friendly Low NOx Metal Fiber Burner



HEAT EXCHANGER

High grade stainless steel heat exchanger



DISPLAY

High quality Digital front panel with easy functionality



ORIFICE

Easy field conversion from NG to LP



Built-in Buffer tank (VTP model only)

Negative Pressure Gas Valve for Maximum Efficiency

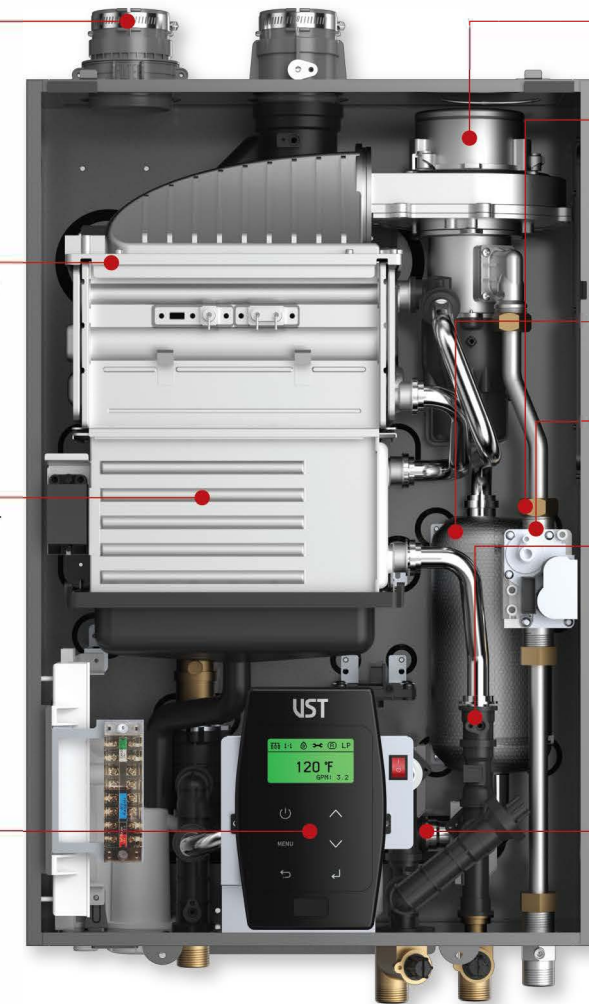
VALVE

Flow Control Valve + Mixing Valve produce stabilized setting temperature



PUMP

Built in Durable 3 speed recirculation pump



CASCADE SYSTEM

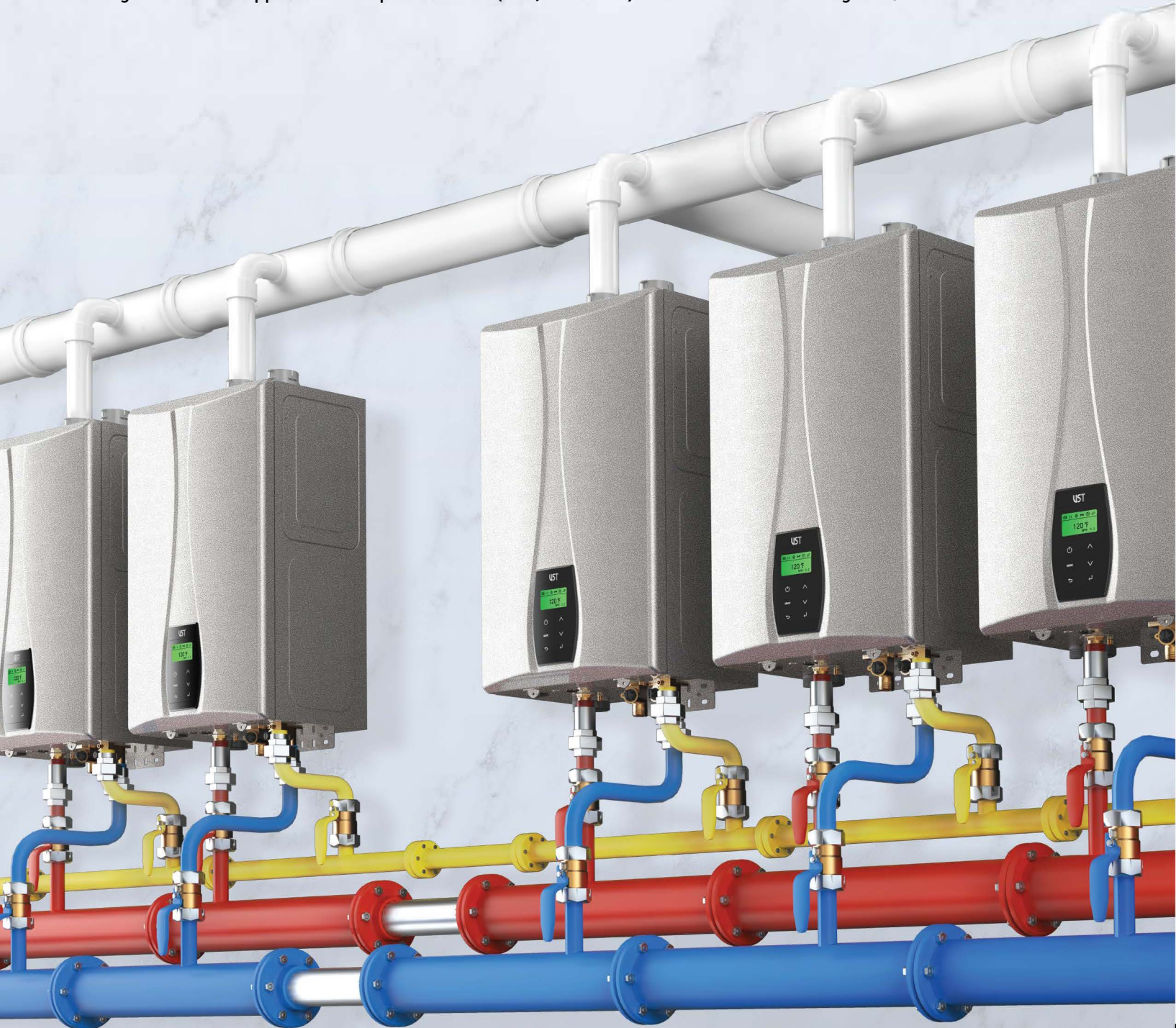
No additional control board is required.

Only an additional wiring and easy dip switch settings are needed.

Advanced Control System only fires the right number of units to meet demand and rotates the master unit reducing stress and unnecessary wear and tear on individual units.

Cascading units are great for applications such as gyms, hotels, schools, hospitals, restaurants, apartment complexes, and etc.

For larger commercial application link up to 8 tankless (VRS/VRP Series) units in communication together.



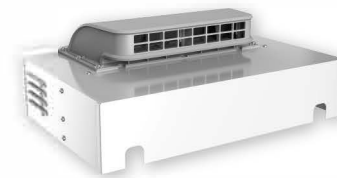
● ACCESSORIES

OUTDOOR VENT KIT

Constructed of High quality materials that will withstand the rigors of the outside environment, sunlight, rain, wind etc.

Sleek and simple design makes for an easy install that looks great installed outdoors.

The outdoor vent kit allows the unit to be mounted outdoors, saving space inside and materials on long venting runs.



VTP/VTS Series



VHP Front



R-BUTTON REMOTE (ON-DEMAND RECIRCULATION)

On demand hot water, when you need it at the push of a button.

Title 24 Compliant—Meets California Energy Commissions Requirements.

Easily activate your hot water on demand system with the push of a button.

Easy installation and mounting hardware included.

Provides homeowners the ability to control the recirculation system remotely to optimize their home's hot water convenience and comfort for maximum efficiency and savings.

INDOOR REMOTE

Provides convenience for the owner to adjust units temp.

Easy installation with mounting hardware provided.

Slim and sleek design.



● WARRANTY INFORMATION

PRODUCT	RESIDENCIAL			COMMERCIAL		
	Heat Exchanger	Parts	Labor	Heat Exchanger	Parts	Labor
Water Heater (Proper Recirc control)	15 yr	5 yr	1 yr	8 yr	3 yr	1 yr
Combi Boiler	10 yr	5 yr	1 yr	5 yr	3 yr	1 yr
Heating Only Boiler	15 yr	5 yr	1 yr	10 yr	3 yr	1 yr

Period of warranty coverage is not reduced when Vesta water is installed with proper recirculation control such as an aquastat/thermostat, timer, or an on-demand recirculation system.

The Labor Warranty is voided when recirculation system is installed without a proper control mechanism such as an aquastat/thermostat, timer, or an on-demand recirculation system.

Residential application means the unit is being used in a single family residence.



Turn down ratio up to 15:1

Internal buffer tank eliminates cold water sandwich

Scale filter implemented in the buffer tank

"Coil around Burner" stainless steel heat exchanger

– Minimizes pressure drop with spiral structure, Two weld points

Flexible Installation

– Upward or Downward Installation, Right or Left side optional air-Intake installation

Simple field gas conversion from NG to LP (LP conversion kit included)

Cleaning friendly : Easy to separate and clean

– Cleaning friendly : External inlet/return/recirculation filter

Built-in 3 speed stainless steel recirculation pump

Residential or Commercial installation

Self Calibration – customizes unit operation parameters

2" PVC vent up to 75 (3" venting : up to 150ft)

Leak detection sensor / High Quality Digital Display

Tankless with Tank

VXP